



E | S E R I E S
W I D E S C R E E N



E-Series Widescreen Multifunction Display

Quick reference guide

E90W, E120W and E140W models

Raymarine[®]

Safety notices



Warning: Ensure safe navigation

This product is intended only as an aid to navigation and must never be used in preference to sound navigational judgment. Only official government charts and notices to mariners contain all the current information needed for safe navigation, and the captain is responsible for their prudent use. It is the user's responsibility to use official government charts, notices to mariners, caution and proper navigational skill when operating this or any other Raymarine product.

Powering the display on

1. Press and hold the **POWER** button until the Raymarine logo appears.
2. Press **OK** to acknowledge the warning window.

Powering the display off

1. Press and hold the **POWER** button until the countdown reaches zero.

Note: If the **POWER** button is released before the countdown reaches zero, the power off is cancelled.

Adjusting the display brightness

1. Press the **POWER** button once.
The Backlight Level control is displayed.
2. Using the rotary control, adjust the brightness level as appropriate.
3. To switch the color palette between Day (very bright) and Night (dark) modes, select **MENU > Display Setup > Palette**.

Simulator mode

The Simulator mode enables you to practice operating your display without data from a GPS antenna, radar scanner, AIS unit, or fishfinder.

The simulator mode is switched on/off in the **System Setup Menu**.

You can also adjust the vessel speed in simulator mode. This is useful for quickly moving to different areas of the chart, for example.

Note: Raymarine recommends that you do NOT use the simulator mode whilst navigating.

Note: The simulator will NOT display any real data, including any safety messages (such as those received from AIS units).

Note: Any system settings made whilst in Simulator mode are not transmitted via SeaTalk to other equipment.

Enabling the simulator mode

1. Press **Menu**.
2. Select the **System Setup** menu.
3. Select the **Simulator** item, and change its value to **On**.

Home screen overview

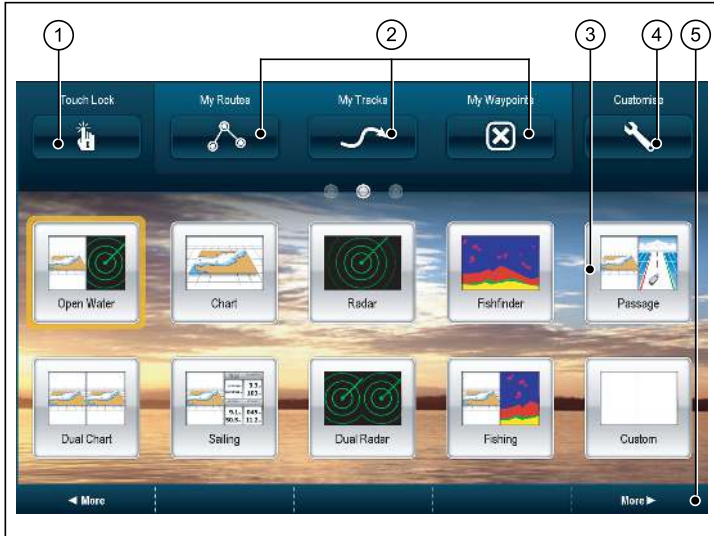
The home screen provides a central point of access to your display's range of applications.

It also provides quick access to your waypoints, routes, and tracks.

Press the **HOME** button at any time to access the home screen.

The home screen consists of a number of application "pages", each represented by an icon. Applications can be started by selecting the relevant page icon.

Use the **MORE** softkeys to scroll the home screen and access additional application pages.




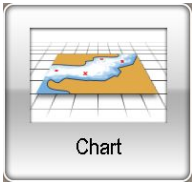

Screen item	Description
1	Touch Lock — select this icon to lock the touchscreen, preventing accidental use. To unlock, use the UniControl to deselect the Touch Lock icon.
2	My Routes / My Tracks / My Waypoints — these icons enable you to centrally manage your lists of routes, tracks, and waypoints.
3	Page — each icon represents a page. A page can display up to 4 applications simultaneously.
4	Customize — select this icon to configure application pages.
5	More — select this softkey to scroll the home screen and access additional application pages.

Pages

Pages are used on your multifunction display to show applications.

Pages are displayed and accessed on the home screen. Each page can display between 1 and 4 applications.

Any page on the home screen can be customized, enabling you to group your applications into different pages, each designed for a specific purpose. For example, you could have a page that includes the chart and fishfinder applications, suitable for fishing, and another page that includes the chart and data applications, which would be suitable for general sailing.

	<p>Empty page. You can add any application(s) to any empty page.</p>
 <p>Chart</p>	<p>Page featuring a single application.</p>
 <p>Custom</p>	<p>Page featuring multiple applications.</p>

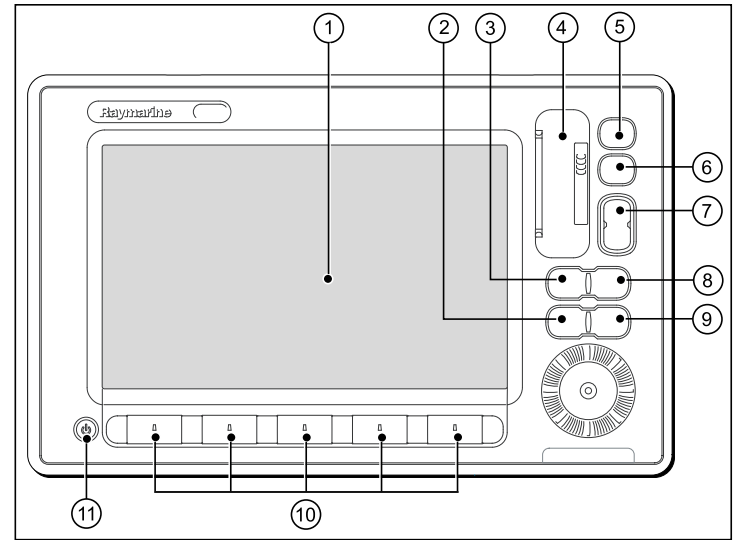
You can also define a "layout" for each page, which determines how the applications are arranged on the screen.

Changing an existing page on the home screen

With the home screen displayed:

1. Select the **Customize** icon.
2. Select the page icon that you want to change.
3. Select the **EDIT PAGE** softkey.
4. Select the appropriate page layout.
5. Select the application(s) you want to display on the page.

Controls



Screen item	Description
1	Touchscreen — you can touch the screen to operate many common functions, including all softkey and menu operations.
2	Menu — accesses the setup menus.
3	Active — selects the active application in page layouts that display more than one application. Press and hold the Active button to expand the active application to a full-screen view.

Screen item	Description
4	Chart card slot — open the card reader door to insert or remove CompactFlash (CF) cards. CF cards are used for additional cartography, archiving waypoint, route, and track data, and upgrading system software.
5	Home — displays the home screen, where you can access all the application pages and your waypoint, track, and route data.
6	WPTS/MOB — press and release to show the waypoint softkeys. Press again to place a waypoint at your vessel's position. Press and hold to place a Man Overboard (MOB) marker at your current position.
7	Range — changes the display scale so that a smaller or larger area can be seen on the screen.
8	Data — accesses the archive and transfer, and databar options.
9	Cancel — press to return to a previous softkey, menu, or dialog level.
10	Softkeys — press to select the corresponding function identified by the on-screen label.
11	Power — press once to switch the unit ON. Once the unit is powered on, press the Power button again to adjust the brightness, and access the scanner power controls. Press and hold to switch the unit OFF.

Hybridtouch overview

Your multifunction display features Hybridtouch, which enables you to operate the unit using the touchscreen and the physical keys.

Many common functions can be accessed using the touchscreen - for example, all softkey operations. However, there are some functions that cannot be performed using the touchscreen. There may also be situations (such as rough sea conditions) when it is not appropriate to use the touchscreen. In these situations, Raymarine strongly recommends that you enable the touch lock, and use the physical keys to operate your multifunction display.

Touchscreen overview

The touchscreen provides a quick way of performing many common functions.

Some of the functions you can operate with the touchscreen include:

- Accessing applications.
- Adding and editing applications pages.
- Placing and editing waypoints.
- Building routes.
- Panning the chart display.
- Placing and moving the cursor.
- Placing and moving VRMs and EBLs.

Note: Raymarine strongly recommends that you familiarize yourself with touch operations while your vessel is anchored or moored. You may find it helpful to use the simulator mode (accessible from **Menu > System Setup Menu**) in these situations.

Note: To disable the audible “beep” that you hear when you touch the screen, go to **Menu > Display Setup > Touch beep**.

Basic touchscreen operations

Placing and moving the cursor using touch

1. Touch the screen at any position on the screen to place the cursor there.

Selecting the active window using touch

With a page featuring multiple applications displayed:

1. Tap anywhere inside the application you want to make active.

A green border appears around the application, indicating that it is active. The softkeys will change to display the relevant options for that application.

Locking the touchscreen

With the home screen displayed:

1. Select the **Touch Lock** icon.

It changes color to indicate that the touchscreen is disabled. All functions are still available using the buttons and softkeys.

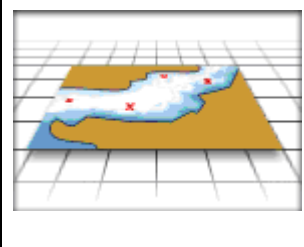
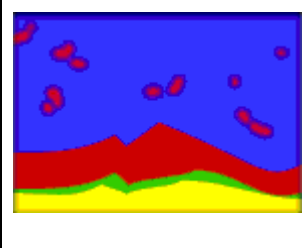
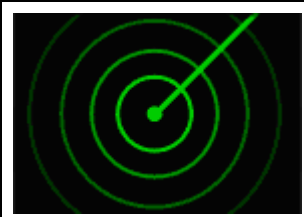
Unlocking the touchscreen

With the home screen displayed:

1. Use the UniControl to highlight the **Touch Lock** icon.
2. Press the **OK** button.

The Touchscreen is enabled.

Applications

	<p>Chart application — provides a 2D or 3D graphical view of your charts to help you navigate. Waypoint, route, and track functions enable you to navigate to a specific location, build and navigate routes, or record where you've been. Upgrade your charts using CompactFlash chart cards to enjoy higher levels of detail and 3D views.</p>
	<p>Fishfinder application — with a suitable Digital Sounder Module (DSM) and transducer, you can use the fishfinder application to help you accurately distinguish between different sizes of fish, bottom structure, and underwater obstacles. You can also view sea depth and temperature data, and mark points of interest, such as fishing spots or wrecks.</p>
	<p>Radar application — with a suitable radar scanner, you can use the radar application to track targets and measure distances and bearings. A number of automatic gain presets and color modes are provided to help you get the best performance from your radar scanner.</p>



Engine application — enables you to view information in the form of gauges and digital data, from up to 3 compatible engines.

VIS POS 000000	Ground Wind 3.3 kt	VWG Waypoint 4.6 kt	Heading 048 °
23°17'48.8" 080°08'11.9"	103 °		
APP Wind 9.1 kt	COG SOG 045 °	VWG Wind 11.1 kt	Speed 13.8 kt
50.5 °	11.2 kt		

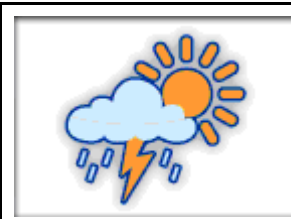
Data application — view system and instrument data on your multifunction display, for a range of compatible instruments.



Course Deviation Indicator (CDI) application — provides a graphical representation of your vessel's course in a "rolling road" format, along with navigation data.



Sirius audio application — (North America only). Use your multifunction display to control a connected Sirius Satellite Radio receiver.



Weather application — (North America only). With a suitable weather receiver connected to your multifunction display, the weather application overlays historical, live, and forecasted weather graphics on a world map.

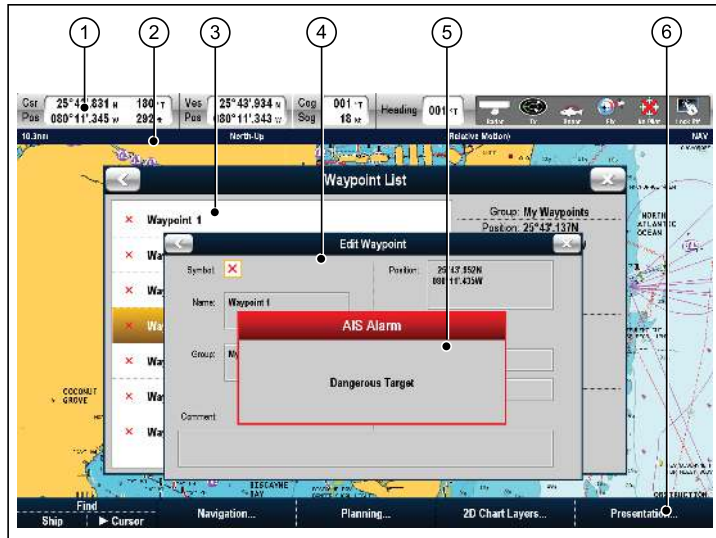


Video application — view a video or camera source on your multifunction display. With the optional video cable accessory, you can switch between 4 video sources, and output what you see on your multifunction display to an external display.



Tutorial application — a slideshow explaining some of the main features of your multifunction display.

Screen overview



Screen item	Description
4	Edit dialogs — enable data to be edited or entered into a list — for example, editing a waypoint..
5	Pop-up messages — alert you to a situation (such as an alarm), or unavailable function. Pop-up messages may require a response from you — for example, press the ACKNOWLEDGE softkey to silence alarms.
6	Softkeys — used to select frequently-used options.

Alarms

Alarms alert you to a situation or hazard requiring your attention.

You can set up alarms to alert you to certain conditions, such as collision warnings and temperature limits.

Alarms are raised by system functions, and also external equipment connected to your multifunction display.

When an alarm sounds, a message dialog is displayed on your multifunction display, and any networked displays. The dialog explains the reason for the alarm.

You can configure the behaviour of the following system and application alarms using the **Alarms Setup Menu**:

- System alarms.
- Navigation alarms.
- Radar alarms.
- Fishfinder alarms.
- AIS alarms.

Screen item	Description
1	Databar — provides information about your vessel and its environment. The position and type of information in the databar can be customized if required. The databar also displays the status icons, which confirm the status of externally-connected equipment, including GPS, AIS, radar, and autopilot units.
2	Status bar — provides information specific to each application. This information cannot be edited or moved.
3	List dialogs — include information you have added to your multifunction display, such as waypoints.

Cancelling alarms

1. Press the **ACKNOWLEDGE** softkey.

Man overboard

If you lose a person or object overboard, you can use the Man Overboard (MOB) function to mark the position.

The MOB function is available at all times, regardless of which application is running.

When MOB is activated, an alert message appears on-screen, and an emergency waypoint is created. A bearing to the waypoint is also provided. The alert and emergency waypoint also appear on any networked displays at the same time.



Activating the man overboard function

1. Press and hold the WPTS/MOB button for 3 seconds.

The normal chart application is reset to the same settings that it had before the MOB alarm was raised.

Note: To obtain a MOB position, your multifunction display must have a GPS position fix.

Cancelling a MOB alarm

1. Press and hold the **WPTS/MOB** button for four seconds.

Once the MOB alarm is cleared:

- the chart application motion mode is reset.
- the databar mode is reset.
- GOTO and route functions are restored.

Raymarine[®]

www.raymarine.com

CE