

Finding a Marine Service and Navigating to It

To find and navigate to a marine service from your current location:

1. From the Home screen, select **Where To?** > **Offshore Services**.
2. Select the marine service category to which you want to navigate. The chartplotter shows the list of the 50 nearest locations and the distance and bearing to each.
3. Select the marine service item to which you want to navigate. A screen containing information about the selected marine service appears.
4. Select **Navigate To** > **Go To** to navigate directly to the location. (Or, select **Route To** to create a specific route to the location.)
5. Follow the colored line on the screen to the destination.



List of Marine Service Items



Go to Destination



Navigation Chart

Marking a Waypoint

To mark your current location as a waypoint:

1. From any screen, press **MARK**.
2. Select **Edit** to designate a specific name, symbol, water depth, water temperature, or add a comment.

To create a new waypoint:

1. From the Home screen, select **Charts** > **Navigation Chart**.
2. By pressing the **Rocker**, use the map pointer (🖱️) to select the location you want to save as a waypoint.
3. Select **Create Waypoint**.

Navigating to a Destination on the Chart

To navigate to a destination on the chart:

1. From the Home screen, select **Charts** > **Navigation Chart**.
2. By pressing the **Rocker**, use the map pointer (🖱️) to select the point on the chart where you want to go.
3. Select **Navigate To**.
4. Select **Go To** to navigate directly to the location, or select **Route To** to create a specific route to the location.
5. Follow the colored line on the Navigation chart to the destination.



Navigation Chart



Go to Destination

Editing or Deleting a Waypoint

To edit a waypoint:

1. From the Home screen, select **Information** > **User Data** > **Waypoints**.
2. Select the waypoint you want to edit.
3. Select **Review** > **Edit**.
4. Select the waypoint attribute you want to change (**Name**, **Symbol**, **Depth**, **Water Temp**, or **Comment**).

To delete a waypoint:

1. From the Home screen, select **Information** > **User Data** > **Waypoints**.
2. Select the waypoint you want to delete.
3. Select **Review** > **Delete**.

GPSMAP® 4000 Series

quick reference guide



GARMIN

Turning the Chartplotter On and Off

To turn on the chartplotter:

1. Press and release the **Power** key.
2. When the warning screen appears, press **SELECT**.

To turn off the chartplotter:

1. Press and hold the **Power** key.
2. If one chartplotter is connected, it shuts down. If multiple chartplotters are connected, a prompt asks if you want to turn off the entire system. Select **Yes** to turn off the entire network, or select **No** to put the chartplotter in sleep mode.

Using the Man Overboard Feature


To mark and navigate to a Man Overboard (MOB) location:

1. From any screen, press **MARK**.
2. Select **Man Overboard**.
3. Follow the colored line on the screen to the spot where the MOB feature was activated.



Man Overboard

To delete an MOB location:

1. From the Home screen, select **Information > User Data > Waypoints**.
2. Select the MOB location you want to delete. MOB locations are marked with the  symbol.
3. Select **Review > Delete**.

Adjusting the Backlight and Color Mode

To adjust the backlight level:

1. While the chartplotter is on, press and release the **Power** key.
2. Select **Backlight**.
3. Select an option to adjust the backlight:
 - To allow the chartplotter to automatically adjust the backlight based on ambient light, select **Auto**.
 - To manually adjust the backlight, select **Up** or **Down**, or use the **Rocker**.



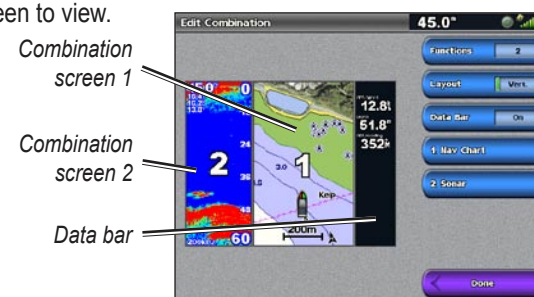
To adjust the color mode:

1. Press and release the **Power** key.
2. Select **Color Mode**.
3. Select **Day Colors**, **Night Colors**, or **Auto**.

Using Combination Screens

To access and change screen combinations:

1. Complete one of the following actions to access the Edit Combination screen:
 - From the Combinations screen, press **MENU** and then select **Change Combination**.
 - From the Home screen, select **Combinations > Unused Combo** (if one is available).
2. Select an option to customize the Combinations screen. If you have a BlueChart® g2 Vision® SD card or are connected to network devices such as sonar and radar, more combination screen options will be available.
 - Select **Functions** to select the number of combination screens.
 - Select **Layout** to change to vertical or horizontal layout.
 - Select **XM Bar** to toggle the XM® bar on or off.
 - Select **Data Bar** to toggle the data bar on or off.
 - Select a numbered option, such as **1. Nav Chart** or **2. Sonar** in the example below, to select the combination screen to view.



Using the GPSMAP 4000 Series Keypad



Automatic Backlight Sensor—detects ambient light and allows the backlight to adjust automatically.

Power/Backlight—press and hold to turn the chartplotter on or off. Press and release to adjust the backlight.

Range (+/-)—press up (+) and down (-) to increase and decrease the map zoom scale.

Rocker—press up, down, left, and right to move the map pointer and enter data.

SELECT—press to confirm messages and select items.

MARK—press to mark your current location as a Waypoint.

MENU—press to view additional options on most screens.

HOME—press at any time to return to the Home screen.

Numeric Keypad (4010/4210/4012/4212 only)—enter numbers and letters into fields instead of using the **Rocker**.

Soft Keys—press the **Soft Key** next to the option you want to view to select it.

SD Card Slot—insert a BlueChart g2 Vision SD card to access additional features on your GPSMAP 4000 series chartplotter. Insert a blank SD card to transfer user data to other GPSMAP 4000/5000 series chartplotters or a PC.

Tips and Shortcuts

- Press **HOME** from any screen to return to the Home screen.
- Press **MENU** from any of the main screens to access advanced settings.
- Press and release the **Power** key to adjust the backlight and color mode.

Go to www.garmin.com for additional documentation and information.

 See the *Important Safety and Product Information* guide in the product box for product warnings and other important information.

Garmin®, the Garmin logo, GPSMAP®, BlueChart®, and g2 Vision® are trademarks of Garmin Ltd. or its subsidiaries, registered in the USA and other countries. These trademarks may not be used without the express permission of Garmin. XM® is a registered trademark of XM Satellite Radio Inc.